

LRP1 (3Z8) Rabbit Monoclonal Antibody
LRP1 (3Z8) Rabbit Monoclonal Antibody
Catalog # AP93652**Specification**

LRP1 (3Z8) Rabbit Monoclonal Antibody - Product Information

Application	WB, IHC, IF, FC, ICC, IP
Primary Accession	Q07954
Reactivity	Rat, Human, Mouse
Clonality	Monoclonal
Calculated MW	504606

LRP1 (3Z8) Rabbit Monoclonal Antibody - Additional Information**Gene ID** 4035**Other Names**

Prolow-density lipoprotein receptor-related protein 1, LRP-1, Alpha-2-macroglobulin receptor, A2MR, Apolipoprotein E receptor, APOER, CD91, Low-density lipoprotein receptor-related protein 1 85 kDa subunit, LRP-85, Low-density lipoprotein receptor-related protein 1 515 kDa subunit, LRP-515, Low-density lipoprotein receptor-related protein 1 intracellular domain, LRPICD, LRP1 (http://www.genenames.org/cgi-bin/gene_symbol_report?hgnc_id=6692), A2MR, APR

Dilution

WB~~1:1000
IHC~~1:100~500
IF~~1:50~200
FC~~1:10~50
ICC~~N/A
IP~~N/A

Storage Conditions

-20°C

LRP1 (3Z8) Rabbit Monoclonal Antibody - Protein Information**Name** LRP1 ([HGNC:6692](#))**Synonyms** A2MR, APR**Function**

Endocytic receptor involved in endocytosis and in phagocytosis of apoptotic cells (PubMed:[11907044](http://www.uniprot.org/citations/11907044), PubMed:[12713657](http://www.uniprot.org/citations/12713657)). Required for early embryonic development (By similarity). Involved in cellular lipid homeostasis. Involved in the plasma clearance of chylomicron remnants and activated LRPAP1 (alpha 2-macroglobulin), as well as the local metabolism of complexes between plasminogen activators and their endogenous

inhibitors. Acts as an LRPAP1 alpha-2- macroglobulin receptor (PubMed:1702392, PubMed:26142438). Acts as TAU/MAPT receptor and controls the endocytosis of TAU/MAPT as well as its subsequent spread (PubMed:32296178). May modulate cellular events, such as APP metabolism, kinase-dependent intracellular signaling, neuronal calcium signaling as well as neurotransmission (PubMed:12888553). Also acts as a receptor for IGFBP3 to mediate cell growth inhibition (PubMed:9252371).

Cellular Location

[Low-density lipoprotein receptor-related protein 1 85 kDa subunit]: Cell membrane; Single-pass type I membrane protein Membrane, coated pit [Low-density lipoprotein receptor-related protein 1 intracellular domain]: Cytoplasm Nucleus. Note=After cleavage, the intracellular domain (LRP1CD) is detected both in the cytoplasm and in the nucleus.

Tissue Location

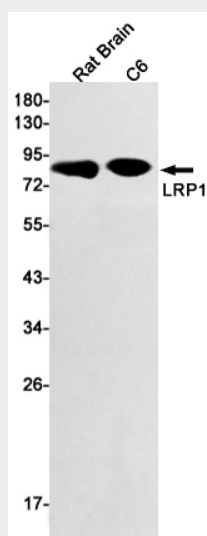
Most abundant in liver, brain and lung.

LRP1 (3Z8) Rabbit Monoclonal Antibody - Protocols

Provided below are standard protocols that you may find useful for product applications.

- [Western Blot](#)
- [Blocking Peptides](#)
- [Dot Blot](#)
- [Immunohistochemistry](#)
- [Immunofluorescence](#)
- [Immunoprecipitation](#)
- [Flow Cytometry](#)
- [Cell Culture](#)

LRP1 (3Z8) Rabbit Monoclonal Antibody - Images



Western blot detection of LRP1 in Rat Brain,C6 cell lysates using LRP1 antibody(1:1000 diluted).